

# Identification of Low Temperature Stress Regulated Transcript Sequences and Gene Families in Italian Cypress

Nicola La Porta · Gaurav Sablok · Giovanni Emilliani ·  
Ari M. Hietala · Alessio Giovannelli ·  
Paolo Fontana · Emilio Potenza · Paolo Baldi

Published online: 23 December 2014  
© Springer Science+Business Media New York 2014

**Abstract** Cold acclimation is a complex transcriptionally controlled process regulated by many different genes and genic-interactions in plants. The northward spreading of woody species is mainly limited by winter harshness. To increase our knowledge about the biological processes underlying cold acclimation, plants evolved in warmer climates can serve as models. In this work, a Suppression Subtractive Hybridization approach using PCR-select was used to isolate Italian cypress (*Cupressus sempervirens* L.) transcript sequences putatively expressed under low temperature stress. After assessing the reliability of the

subtractive step, a total of 388 clones were selected and sequenced. Following sequence assembly and removal of the redundant cDNAs, 156 unique transcripts were identified and annotated in order to assign them a putative functional class. Most of the identified transcripts were functionally classified pertaining to stress in cellular and chloroplast membranes, which are previously known to be severely damaged by cold treatment. Among the identified functional gene families, the extensively represented ones were dehydrins, early light-inducible proteins, senescence-associated genes and oleosins. The last three gene families were further selected for phylogenetic analysis, with the corresponding protein sequences across the complete genomes of the model plants *Populus trichocarpa*, *Vitis vinifera*, *Physcomitrella patens*, and *Arabidopsis thaliana*. The relationship with the ortholog sequences coming from these species and their further implications are discussed.

**Electronic supplementary material** The online version of this article (doi:10.1007/s12033-014-9833-2) contains supplementary material, which is available to authorized users.

N. La Porta (✉) · G. Sablok · P. Fontana · E. Potenza ·  
P. Baldi  
IASMA Research and Innovation Centre, Fondazione Edmund  
Mach (FEM), Via E. Mach 1, 38010 San Michele all'Adige,  
Trento, Italy  
e-mail: nicola.laporta@fmach.it

N. La Porta  
MOUNTFOR Project Centre, European Forest Institute, Via E.  
Mach 1, 38010 San Michele all'Adige, Trento, Italy

G. Sablok  
Plant Functional Biology and Climate Change Cluster (C3),  
University of Technology Sydney, PO Box 123, Broadway,  
NSW 2007, Australia

G. Emilliani · A. Giovannelli  
Trees and Timber Institute (IVALSA), National Research  
Council (CNR), Via Madonna del Piano 10,  
50019 Sesto Fiorentino, Firenze, Italy

A. M. Hietala  
The Norwegian Forest and Landscape Institute,  
Høgskoleveien 8, Pb. 115, 1432 Ås, Norway

**Keywords** SSH · Gene expression · ELIPs · SAGs ·  
Oleosins · Dehydrins

## Introduction

Cold is demonstrated to be one of the most limiting factors influencing plant growth. Winter sub-zero temperatures capable of severely damaging plant tissues are common in all temperate climates. Nonetheless, many plant species have the ability to increase their freezing tolerance when exposed to low but non-freezing temperatures (0–15 °C). This process, biologically known as cold acclimation, involves a number of physiological and molecular changes [1]. As a consequence, many genes and gene families are up- or down-regulated during cold acclimation in order to enable the plant to better resist to sub-zero temperatures.

Cryoprotective proteins [2, 3], osmolites such as sugars and certain amino acids [4, 5], dehydrins [6] and protein families such as late embryogenesis abundant (LEA) [7] and early light-inducible proteins (ELIP) [8], are known to accumulate in plants in response to low temperature exposure. Most of the studies related to cold tolerance have been performed on herbaceous model species such as *Arabidopsis* [9] or using cereal species such as rice [10] or barley [11]. Even if the mechanism of cold acclimation appears to be quite conserved among plants, differences still exist, especially for species that represent different phylogenetic lineages. During the last few years a number of molecular studies have been performed also on perennial woody species, in order to highlight similarities and peculiarities in low temperature response [12–14].

Italian cypress (*Cupressus sempervirens* L.) is a woody species originating in the Mediterranean area and is capable to adapt to a wide range of climates, including the continental one. During winter, cypress can cope with temperatures below  $-10\text{ }^{\circ}\text{C}$  or even  $-15\text{ }^{\circ}\text{C}$  [15]. Since the Roman time this conifer has been introduced in areas very far from its native range and nowadays it is a common landscape tree, not only in all Mediterranean regions [16] but also in colder European regions and at lower elevation in mountains, where cypress is often used as ornamental tree or as a windbreak [17]. As cypress clones show considerable variation in cold tolerance [18], the tree can serve as a model plant to better understand the processes that underlie cold acclimation, with the ultimate aim to generate more cold resistant cypress genotypes.

From a physiological and molecular point of view, cypress is still a poorly studied species. However, the few studies available on this species indicate that low temperature can heavily affect photosynthesis in Italian cypress [19] as well as in other Cupressaceae [20] and consequently significantly impair the tree growth. Photosynthesis in cypress is significantly influenced also by aging [21], and by canker infection [22], with different molecular mechanisms [23]. Nevertheless, the current climate change would be expected to shift the distribution of cypress, as plants expand in newly favorable areas and decline in increasingly hostile locations [17, 24].

In order to provide insights into the mechanisms of low temperature response of cypress, a genome- or transcriptome-wide analysis would be the ideal solution. Nowadays, methods such as RNA-seq provide a powerful tool to analyze hundreds or even thousands of transcripts linked to putative genes within a single experiment. Nevertheless, such techniques are also rather challenging due to the necessity to assembling millions of short reads and require the availability of genome sequence to link the transcript abundance to certain genes (for review see [25]). Suppression subtractive hybridization (SSH) provides a possible alternative to

RNA-seq. SSH eliminates most of the redundant sequences between two given conditions, one major advantage of the technique being the production of cDNA libraries enriched in rare transcripts [26–29]. In the present paper, we describe the use of SSH technique for the cloning of cypress sequences putatively regulated by low temperature. Some of the highly represented gene families were then phylogenetically analyzed in comparison with the most similar sequences coded by the complete genomes of *Populus trichocarpa*, *Vitis vinifera*, *Physcomitrella patens*, and *Arabidopsis thaliana*.

## Materials and Methods

### Plant Material and Treatment Conditions

A single cypress genotype (Clone 8), derived from a breeding program carried out by IPP-CNR of Florence [30], was used in cold treatment experiments. Five ramets of the same genotype were grown in pots in 50 % sand and 50 % soil to the height of about 60 cm. Before cold treatment the plants were acclimated at  $22\text{ }^{\circ}\text{C}$  in a growing chamber for 21 days (12 h light  $160\text{ }\mu\text{mol photons m}^{-2}\text{s}^{-1}$  and 12 h dark). The plants were cold treated in a daily regime of 12 h light ( $160\text{ }\mu\text{mol photons m}^{-2}\text{s}^{-1}$ ) and 12 h dark at  $3\text{ }^{\circ}\text{C}$  for 7 days. Leaf samples were collected from each plant before cold treatment (control) and after 7 days at  $3\text{ }^{\circ}\text{C}$ . All samples were immediately frozen in liquid nitrogen and kept at  $-80\text{ }^{\circ}\text{C}$  for mRNA isolation.

### mRNA Extraction and Subtraction Technique

All the collected samples were ground in liquid nitrogen, then total RNA was extracted using a modified hot borate method as described in Moser et al. [31]. Three grams of cypress tissue was used for each extraction. Messenger RNA was obtained from total RNA using the Oligotex mRNA Mini Kit (Qiagen, Valencia, CA, USA) according to the manufacturer's instructions, starting from  $250\text{ }\mu\text{g}$  of total RNA. In order to identify cypress sequences putatively regulated by low temperature, a subtractive approach was performed using PCR-select cDNA subtraction kit (Clontech, Mountain view, CA, USA) according to the manufacturer's instructions. Subsequently, two different subtraction reactions (forward and reverse subtraction) were performed.

### Gene Cloning and Sequencing

The sequences obtained from PCR-select were cloned into pCR<sup>®</sup>2.1-TOPO<sup>®</sup> cloning vector. An aliquot of  $2\text{ }\mu\text{g}$  of subtracted cDNA was loaded onto a 1.5 % agarose gel and all the bands between 300 and 1,000 bp were eluted and

cloned into the vector with TOPO TA cloning kit (Invitrogen, Carlsbad, CA, USA) following the manufacturer's instructions. A total of 500 single colonies were examined by digestion of the inserted product with *AluI* enzyme. All the clones showing different restriction patterns were chosen and sequenced using an ABI PRISM 3100 Genetic Analyzer, Applied Biosystems. Sequencing reactions were prepared using the Perkin Elmer Big Dye DNA sequencing kit (Perkin Elmer, Foster City, CA, USA). Sequencing reactions were cleaned using the Centri-Sep spin columns (Princeton Separations, Adelphia, NJ, USA). In this way 156 unique sequences were found and used for similarity search with known genes in GenBank using the BLASTx algorithm.

#### Dot Blot Hybridization

Plasmid DNA was purified using QuickLyse Miniprep Kit (Qiagen, Valencia, CA, USA) according to the manufacturer's instructions. The inserts were amplified by PCR using M13 forward and reverse primers. PCR amplification was carried out in a final volume of 15  $\mu\text{l}$  with 1.5  $\mu\text{l}$  of 10 $\times$  buffer, 2 mM  $\text{MgCl}_2$ , 0.2 mM dNTPs, 1.5  $\mu\text{M}$  of each primer and 0.2 U of Taq polymerase (AmpliTaq Gold; Applied Biosystems, Foster City, CA, USA). The cycling regime consisted of a denaturing step at 94  $^\circ\text{C}$  for 10 min, followed by 35 cycles at 94  $^\circ\text{C}$  for 30 s, 60  $^\circ\text{C}$  for 30 s and 72  $^\circ\text{C}$  for 60 s, with a final extension of 5 min at 72  $^\circ\text{C}$ . Dot blot hybridization was performed as described in Simon et al. [32]. PCR-amplified fragments were denatured by heating at 95  $^\circ\text{C}$  before blotting on positively charged nylon membranes (Boehringer Mannheim, Germany). Membranes were pre-hybridized for at least 2 h without probe and then incubated overnight with digoxigenin (DIG)-labeled probes (DIG oligonucleotide 3'-end Labeling Kit, Boehringer Mannheim) at 55  $^\circ\text{C}$ . Pre-hybridization and hybridization solutions contained 0.1 mg  $\text{ml}^{-1}$  of Poly-A to prevent non-specific binding of the tailed probes. Chemiluminescence detection was performed using Chemiluminescent Substrate For Alkaline Phosphatase (CSPD) as a substrate (DIG detection kit, Boehringer Mannheim). All steps were performed according to the manufacturer's instructions. Membranes were exposed to X-ray film for 20, 30, or 60 min.

#### Functional Annotation and Phylogenetic Analysis

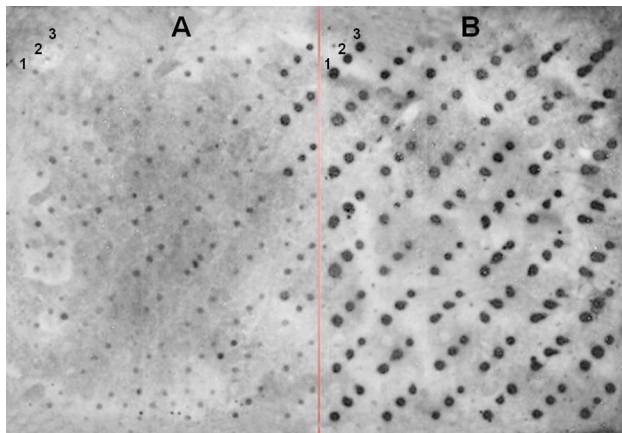
The unigene dataset obtained was annotated by doing BLASTx searches (cut off E-value  $1\text{e-}10^{-5}$  against NCBI (<http://www.ncbi.nlm.nih.gov/>) and TAIR (<http://www.arabidopsis.org/>) database. Following BLASTx searches, we performed Gene Ontology classification. The obtained ontologies were further slimmed according to Plant GO Slim category

available from [www.geneontology.org](http://www.geneontology.org). In order to characterize the ESTs obtained as significantly expressed during cold treatment, a subset of low temperature responsive genes were further selected for phylogenetic analysis and namely: senescence-associated proteins—SAG (*EU430719*, *EU430725*, *EU430726*, *FJ237440*, *FJ237451*, *FJ237454*, *FJ237465*, *FJ237479*, *FJ237482*, *FJ379995*), early light-induced proteins—ELIP (*EU430722*, *FJ237435*, *FJ237483*, *FJ237486*, *FJ379970*, *FJ380014*), oleosins (*EU430721*, *FJ237443*, *FJ237481*, *FJ237494*, *FJ380021*) and dehydrins (*FJ237450*, *FJ237457*, *FJ237480*, *FJ379968*, *FJ379975*, *FJ379996*, *FJ379998*, *FJ380015*, and *FJ380020*). The selected sequences were compared with the complete genomes of the model plants *Populus trichocarpa*, *V. vinifera*, *P. patens*, and *A. thaliana* for the identification of the putative homologs. Conceptually translated amino acid sequences of the ESTs cloned from cypress were aligned with MUSCLE [33] and the alignments were trimmed to eliminate low homology regions. Curated final alignments were then imported in MEGA5 [34] to build Neighbor-Joining trees using the JTT substitution model with 1,000 bootstrap support.

## Results

### Gene Cloning and Functional Classification

In the present work, we constructed a subtracted cDNA library enriched in sequences putatively regulated by low temperature. mRNA extracted from a single cypress genotype (Clone 8) before and after 7 days of low temperature treatment was used as driver and tester RNA and two subtracted libraries, enriched in induced and repressed sequences, respectively, were obtained. All the cDNA fragments shorter than 300 bp were discarded prior to analysis. Electrophoresed fragments longer than 300 bp were gel eluted and subsequently cloned in *E. coli*. To assess the robustness and reliability of the subtraction step, 48 colonies from the induced library and 48 colonies from the repressed ones were randomly selected for dot blot hybridization. After purification of plasmid DNA, the inserts were amplified by PCR and blotted in triplicate onto nylon membrane. cDNA obtained from mRNA extracted from cold-treated cypress (Clone 8) was fluorescently labeled as described in Materials and Methods and used as a probe for hybridization with the spotted sequences (Fig. 1). The great majority of the fragments extracted from the repressed library showed a very weak or no signal after hybridization (Fig. 1a) while all the fragments extracted from the induced library showed a clear signal (Fig. 1b), suggesting that most of the fragments of each library were actually specific to the corresponding treatment condition. A total of 500 colonies were randomly



**Fig. 1** Dot blot analysis of subtracted libraries. 48 random colonies from *Cypress* repressed library (a) and induced library (b) were spotted in triplicate [1–3] onto the nylon membrane and hybridized with fluorescently labeled cDNA from cold-treated cypress (Clone 8)

selected and tested for insert presence by direct colony PCR. Out of these, 388 showed an insert, which was sequenced using Sanger chemistry.

Following the sequencing, chromatograms were observed, vectors were trimmed off and the sequencing assembly was performed using the CAP3 program [35], resulting in 156 unigenes (contigs + singeltons). The average sequence length of the UniGene set was 394 bp, the longest sequence being 550 bp and the shortest 224 bp (Supplementary material, table S1). The most represented protein families are shown in Table 1 (see also supplementary material, Table S1 for the complete list of sequences). Based on their putative functions, the cDNA clones were characterized by grouping them into functional classes according to gene ontology (GO) classification

followed by Plant GO Slim classification [36]. GO slim classification revealed three main “biological processes”: “glycolysis”, “gluconeogenesis”, and “response to cold”, followed by some more general categories such as “oxidation–reduction process”, “fatty acid biosynthetic process” and “phosphorylation” (Fig. 2a). Additionally, some other stress-related groups of sequences which were found represented were “response to water stimulus”, “abscisic acid-mediated signaling pathway” and “response to salt stress” (Fig. 2a). GO slim classification of the “cellular component” revealed an abundance of GO categories associated with chloroplasts and membranes, such as “thylakoid membrane”, “integral to membrane”, and “chloroplast membrane” categories (Fig. 2b). However, GO slim “molecular functions” revealed that “ATP binding” is by far the highest class of the GO term involved in molecular function (Fig. 2c).

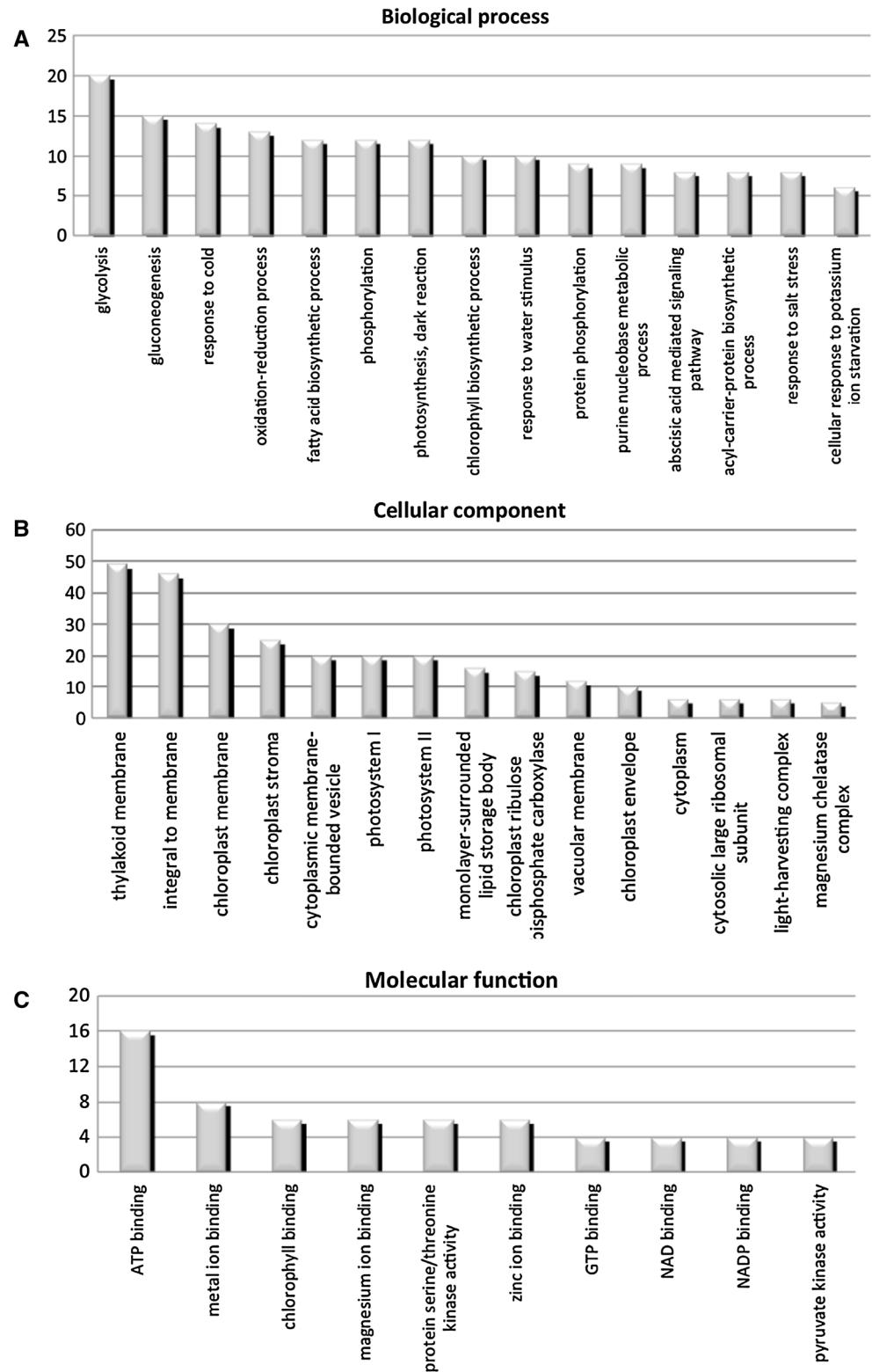
### Phylogenetic Analysis

When the 156 *cypress* sequences were categorized according to their putative function, it was noticed that a number of genes actually belonged to few specific gene families (Table 1; Supplementary materials, Table S1). In order to deepen the understanding of the highly represented gene families, and specifically the ELIP family, the SAG family, the oleosins family and dehydrin family, a phylogenetic analysis was performed. This approach was applied to map the newly cloned and annotated ESTs from *cypress* in a genomic and functional context (regardless of the best blast hit) providing a deeper annotation that might highlight targets for further investigation such as multi-gene family members differential expression (sub-functionalization

**Table 1** Most represented protein families from the *Cypress* cold-regulated UniGene set after BLAST search

| Putative function                       | No. of sequences | GenBank ID   | Best homology (%) |
|---|------------------|--|-------------------|
| Dehydrin                                | 11               | EU430717; FJ237450; FJ237457; FJ237480; FJ379975; FJ379968; FJ379998; FJ379996; FJ380020; FJ380015; FJ379973 | 87                |
| Senescence-associated protein           | 10               | EU430726; FJ237454; EU430725; FJ237482; FJ237465; FJ237440; EU430719; FJ379995; FJ237479; FJ237451           | 94                |
| Cold-induced protein                    | 9                | FJ379984; FJ379992; FJ380007; FJ380016; FJ379980; EU430718; FJ379969; FJ237485; EU430723                     | 85                |
| Chlorophyll <i>a/b</i> -binding protein | 7                | EU430724; FJ380036; FJ237489; EU430707; FJ380017; FJ237471; FJ237473   | 100               |
| Early light-induced protein             | 6                | FJ237486; FJ237483; FJ237435; EU430722; FJ380014; FJ379970   | 82                |
| Oleosin                                 | 5                | FJ237481; FJ380021; EU430721; FJ237443; FJ237494   | 89                |
| Ribulose biphosphate carboxylase        | 5                | FJ237488; FJ379983; FJ237462; FJ380006; EU430711   | 87                |
| Aquaporin                               | 3                | EU430708; FJ380011; FJ379986   | 91                |

**Fig. 2** Distribution of Cypress cold-regulated UniGene set within the gene ontology (GO) functional assignments. The number of sequences belonging to each category is indicated on the y axis



evolutionary processes). *C. sempervirens* ORF from EST sequences were identified using the frame correction as implemented in FrameD [37] and then BLASTed against the genome predicted coding regions of *P. trichocarpa*, *V.*

*vinifera*, *P. patens*, and *A. thaliana* to identify the putative homologs. In addition to these complete genomes, additional sequences were added in case of well characterized gene families mined from the literature, as in the case of the



*Coffea canephora* oleosin gene family [38], the *Rhododendron catawbiense* ELIP family [39], and the *Pinus sylvestris* dehydrin family [40]. Despite the low bootstrap support of few nodes, due to the divergence of sequences belonging to species spanning a wide evolutionary range and the limited number of sites used to build the dendrograms, it is possible to depict patterns of phylogenetic classification of the cypress ESTs cloned. The dendrogram for the six cypress sequences along with the homologs in the other plant species in ELIP family is shown in Fig. 3. Three of the sequences (*EU430722*, *FJ237435*, and *FJ237483*) were clustered together but quite far from all the other ELIPs. Two sequences (*FJ237486* and *FJ379970*) showed higher similarity to ELIPs from other species but still were clustered separately, while only *FJ380014* was included in the *R. catawbiense* group (Fig. 3). This might reflect that the ELIP family is represented with in-paralogs in cypress. It is noteworthy to mention that previously seven highly homologous ELIPs (*RcELIP1-7*) have been characterized in *R. catawbiense* [39].

For the SAG family, six sequences (*FJ237454*, *FJ237482*, *EU430726*, *FJ237440*, *FJ237465*, and *EU430719*) were found clustered together with homologous SAGs from *P. trichocarpa*, *V. vinifera* and *A. thaliana* (Fig. 4). Three sequences (*EU430725*, *FJ237479* and *FJ379995*) clustered together but showed very divergent patterns of evolution from all the other senescence-associated genes from cypress and the other species considered. The last cypress SAG (*FJ237451*) was found to belong to a distinct group of sequences (Fig. 4).

Oleosin analysis resulted in quite a complex dendrogram (Fig. 5) in which at least two main groups of sequences were recognizable, each group containing genes from most of the species in analysis. The cypress oleosins were represented in both groups: *FJ237485*, *FJ380021*, and *FJ237494* in the first and *EU430719* and *FJ237443* in the second group. Finally, the dendrogram built with dehydrin sequences was not considered enough accurate due to a lack of bootstrap support and therefore was not further analyzed (see supplementary material Fig. S1).

## Discussion

Understanding the transcriptional control of genes, their up- and down-regulation under cold stress can suggest potential grounds for developing strategies to cope with the genetic loss due to cold conditions [41]. In plant functional genomic research, ESTs sequences are a valuable tool to study gene expression, especially for those species where the complete genomic sequence is not yet available [42, 43]. SSH represents a fast and economic way to identify and develop characterization approaches for sequences regulated during different developmental stages or biotic

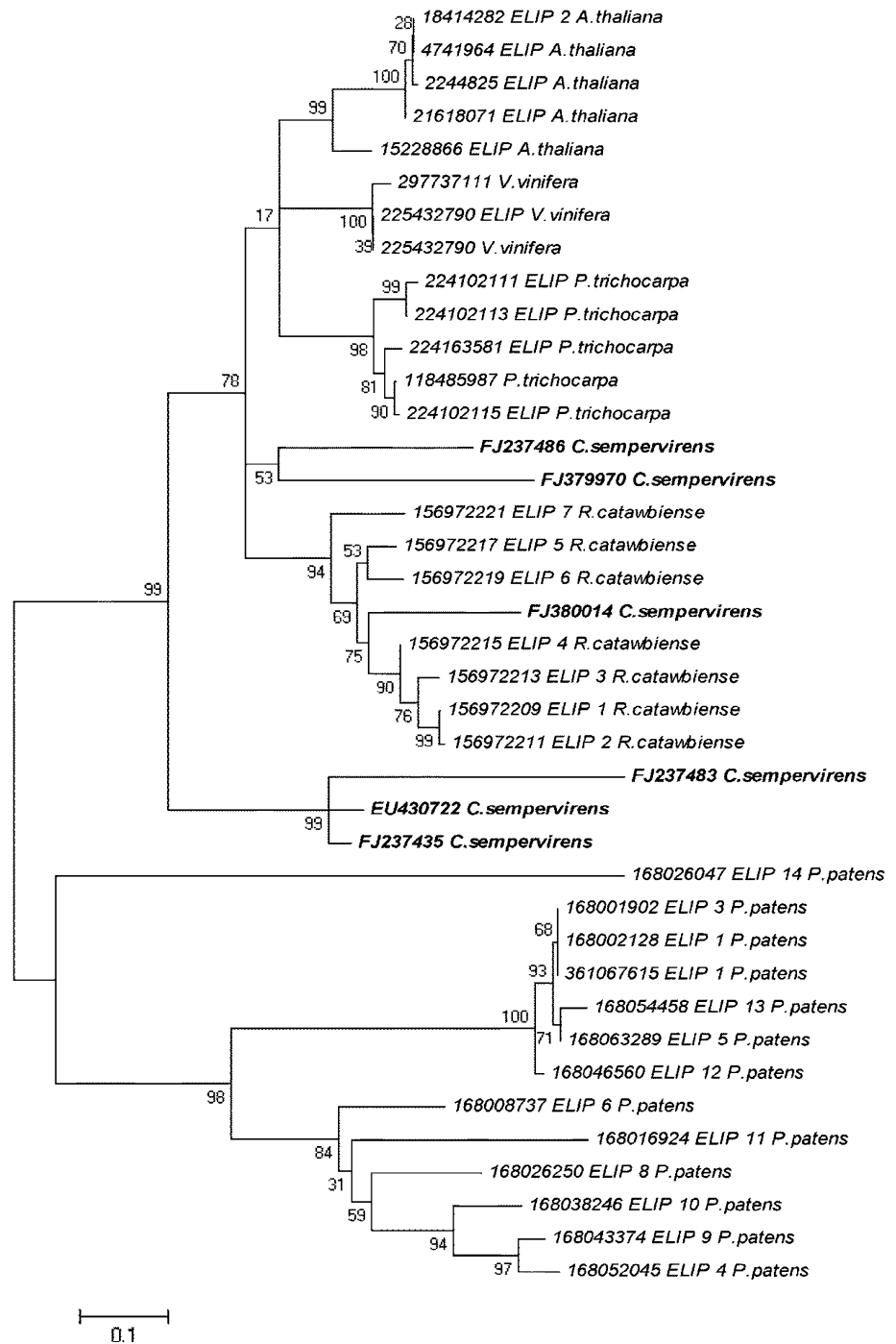
and abiotic stresses [26–29]. In order to identify cypress ESTs potentially regulated during low temperature exposure, SSH analysis was applied and 156 unique sequences were isolated. During cloning a cut-off value of 300 bp was applied in order to avoid all the shortest sequences that could be preferentially inserted in vectors during the cloning step. At the end, after applying such length threshold, we obtained 21 out of 156 sequences (13.4 %), which were shorter than 300 bp, and only 9 out of 156 (5.7 %), which were shorter than 250 bp (Table S1).

The efficiency of the enrichment step during SSH can greatly vary according to several factors, such as plant species, treatment conditions and RNA extraction efficiency [29, 44, 45]. In the present study, random colonies were selected and analyzed by dot blot hybridization to prove the efficiency of the protocol. Most of the sequences extracted from the induced library displayed a strong signal when labelled cDNA from cold-treated cypress plants was used as a probe (Fig. 1). On the contrary, only very few colonies of the repressed library contained sequences capable to hybridize with the probe, suggesting that most of the sequences in each group were differentially expressed during cold treatment. Even though this first test cannot give an accurate indication about the nature of the inserted sequence, it can be effectively used to assess the quality of the subtractive step, before proceeding with further analysis. The annotation of the cloned sequences also provided a good indication of the success of the enrichment step during SSH. When sequences were annotated according to the GO main term “biological process”, the two more represented groups were “glycolysis” and “gluconeogenesis”, which is well in accordance with previous findings in other species where cryoprotective metabolites, such as sugars, are known to be accumulated as a consequence of low temperature [41, 46, 47]. Changes in starch metabolism and sugar content during cold acclimation seem to be part of a conserved mechanism common to both herbaceous and woody plants [48, 49]. It is known that soluble sugars act as osmolytes [50, 51] in over-wintering plant tissues, so the breakdown of starch, may represent (as well as a source of carbohydrates to provide energy for acclimation) an active process to produce osmolytes for hardening.

As further indication of a successful enrichment step during SSH lies in the fact that the third observed biological category was specifically “response to cold”, while sequences belonging to biological processes related to ABA signaling [52], response to water changes [53] and salt stress [54] were also found among the more represented groups.

Moreover, some genes identified in the present work by SSH have been previously used for expression studies by qRT-PCR in different cypress accessions during cold

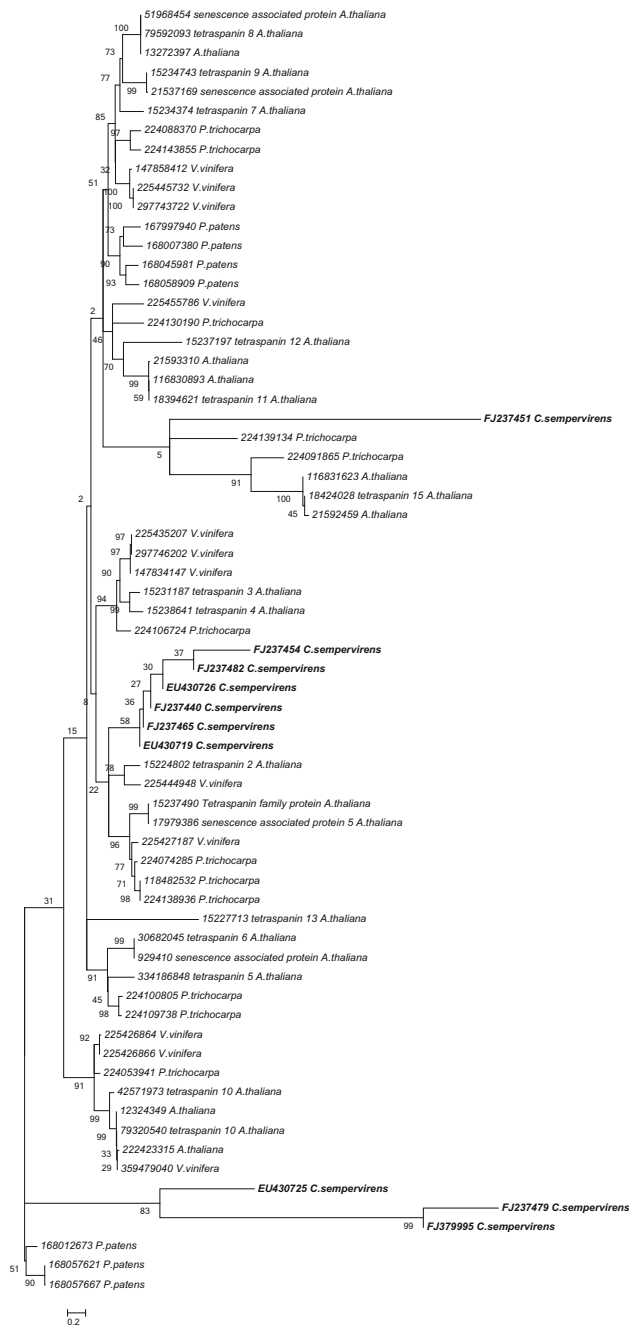
**Fig. 3** Dendrogram based on the alignment of amino acid sequences from cypress putative early light-inducible proteins (ELIP) clones and sequences coded by *Populus trichocarpa*, *Vitis vinifera*, *Physcomitrella patens*, *Arabidopsis thaliana*, and *Rhododendron catawbiense*. Bootstrap values based on 1,000 replications are indicated on the branches. In **bold** are the sequences characterized in this study



acclimation [28, 55]. Such genes resulted regulated in all the accessions tested, this suggesting a possible role for these sequences during cypress response to low temperature.

The involvement of chloroplasts and biological membranes during cypress response to low temperature is evident when the sequences annotated according to the GO main term “cellular component” are considered (Fig. 2b). Our results are in line with previous findings in several species, where damage to cellular membranes and to the photosystem was

demonstrated during cold stress [56]. In particular, changes in plasma membrane proteins during acclimation have been identified as a crucial step for plant adaptation to low temperature [57]. Induction of several dehydrin families, disassembly of microtubules and increased ATPase activity represent some of the most relevant changes [58, 59]. During the induction of cold stress, plants have to cope also with photo-inhibition, due to excess of light absorption [60] and in cypress, even in absence of cold stress, excess of light



**Fig. 4** Dendrogram based on the alignment of amino acid sequences from cypress putative senescence-associated genes (SAG) clones and sequences coded by *Populus trichocarpa*, *Vitis vinifera*, *Physcomitrella patens*, *Arabidopsis thaliana*. Bootstrap values based on 1,000 replications are indicated on the branches. In **bold** the sequences characterized in this study

absorption induces significant photo-inhibition by changes of photosystem II [61]. The response is a complex modulation of gene expression aimed at limiting photosystem damage [62].

Among the functionally identified classes representing the major transcripts identified in this study, dehydrins were found among the most abundant families (Table S1 in

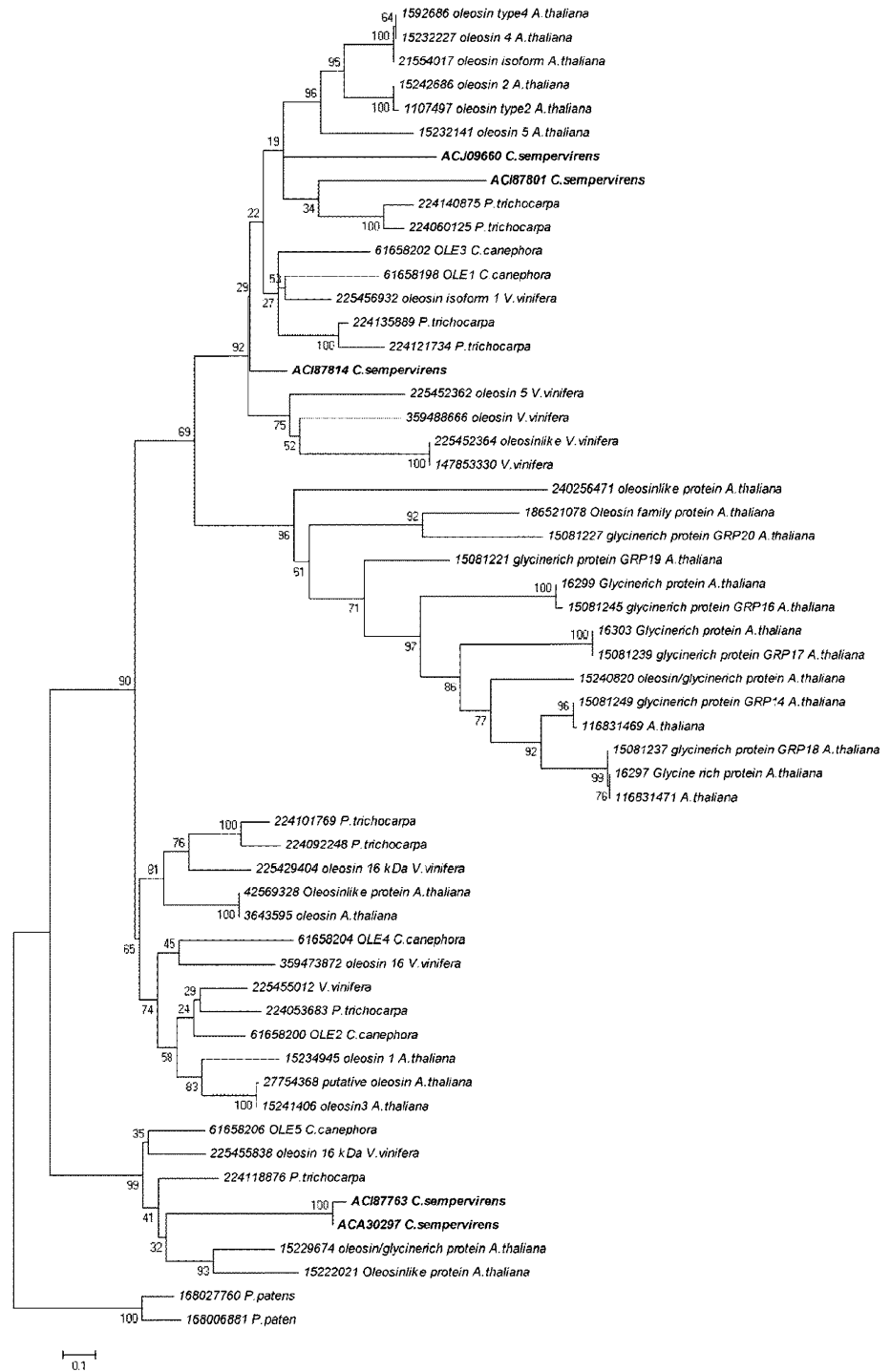
supplementary material). Dehydrins, a wide group of hydrophilic proteins that contain a large number of charged amino acids, belong to the group II of late embryogenesis abundant (LEA) protein family. This multi-family proteins present low sequence similarity characterized only by some small motifs that are conserved [63]. They display a broad repertoire of functional motifs and wide variations in the expression among the orthologs and in-paralogs [64]. Functionally, dehydrins play a protective role in the plant cell during drought, salt and low temperature stresses as well as during biotic stresses [6, 65]. Dehydrins show a random coil structure which can change the function, according to the environment where they act: this characteristic is called “moonlighting” [66]. To avoid bias in the phylogenetic analysis with inclusion of the extremely divergent functional sites, which can lower the reliability of the phylogenetic analysis, we prefer to exclude this family from the phylogenetic analysis. However, the dehydrin dendrogram is shown in the supplementary material (Fig. S1).

Numerous ELIP sequences were also identified among the cypress cold-induced genes. ELIPs are stress-induced thylakoid proteins localized in the stroma lamellae [67] and are thought to play a protective role in oxidative stress by binding free chlorophylls released during photoinhibition [68]. ELIPs from this study were divided into different groups when phylogenetic analysis was performed (Fig. 3). According to our results, only *FJ380014* was clearly clustered with ELIPs from other species, namely from *R. catawbiense*. From this species, seven highly homologous ELIPs (*RcELIP1-7*) were recently characterized [39]. All RcELIPs were up-regulated in leaves during winter, when photosynthesis was down-regulated [39, 69], thus suggesting that RcELIPs might protect winter evergreen leaves from sun [39]. Nonetheless, some recent studies showed that in *A. thaliana* suppression of two ELIPs (*ELIP1* and *ELIP2*) does not change plant resistance to oxidative stress [70]. Taken together, these results may indicate the existence of several ELIP classes with functional in-paralogs as a result of genome duplication in plants, as also suggested by our analysis.

The second protein family chosen for phylogenetic analysis was SAG. During leaf senescence a number of physiological changes have been identified in chlorophyll content, photochemical efficiency, enzyme activities, protein levels, membrane ion leakage and so on [71]. Such changes are associated to a complex regulation of gene expression. Many of the SAGs can be induced by other environmental factors, including temperature stress, pathogen infection and plant hormones [72]. In a recent work on wheat, two members of this family, *TaSAG3* and *TaSAG5*, responded differently to low temperature. After 7 days of exposure to 4 °C, only *TaSAG3* was found up-regulated, while the *TaSAG5* transcript level remained unchanged



**Fig. 5** Dendrogram based on the alignment of amino acid sequences from cypress putative Oleosin clones and sequences coded by *Populus trichocarpa*, *Vitis vinifera*, *Physcomitrella patens*, *Arabidopsis thaliana*, and *Coffea canephora*. Bootstrap values based on 1,000 replications are indicated on the branches. In **bold** are the sequences characterized in this study



during all the treatment [73]. In a previous study, an expression analysis of some cypress SAG sequences (*EU430726*, *EU430725*, *FJ237440*) was published by our group [55], showing that three members of this family are overexpressed during cold acclimation. Such results can suggest that some members of SAG family may have a functional role also when cypress has to cope with low temperatures. Phylogenetic clustering of the cypress SAGs

clearly distinguished them into two completely separated clades (Fig. 4), suggesting the existence of two functional classes for SAGs in cypress, which is in accordance with the previous reports from several plant species [72, 74].

The last protein family selected for phylogenetic analysis was the oleosin family (Fig. 5), whose members are not a classical cold-regulated genes but recently have been shown to be involved in seed freezing tolerance by

Shimada et al. [75]. Moreover oleosins have been found to be inducible by ABA [76] a plant hormone which is a known regulator of several cold-responsive genes [77, 78]. From the phylogenetic inferences presented, it is clear that at least two distinct oleosin groups exist in cypress, as in the case of most of the plant species studied (Fig. 5). Oleosin classification is usually performed according to their size as high- or low-molecular weight oleosins [79]. Recently, oleosins have been classified in different groups in *Arabidopsis* according to tissue-specific expression [80]. Therefore, it would be not surprising that different oleosin groups were regulated by different environmental factors, even if a specific study would be needed to prove it.

## Conclusion

Italian cypress response to low temperature is a key factor to obtain new improved genotypes adapted to northern environments where this tree is being introduced. In this work, we described the isolation of 156 cypress sequences putatively regulated by low temperature. The subtractive approach used was not as extensive as, for example, RNAseq studies; nevertheless, it proved to be effective to isolate and identify novel sequences in a relatively poorly studied tree species as Italian cypress. By phylogenetic analysis, it was possible to highlight peculiarities and similarities between some cypress gene families putatively regulated by cold and the corresponding families of several other species. Even though a more detailed expression and functional study of the isolated genes is still needed to confirm which sequences are actually involved in low temperature response, the present work can be considered a successful attempt to provide a set of cold-regulated sequences in an economically important woody species such as Italian cypress.

**Acknowledgments** The authors wish to thank Dr. Paolo Raddi, Mr. Vincenzo Di Lonardo, and Dr. Roberto Danti (IPP-CNR, Florence, Italy) who kindly supplied the selected cypress genotypes used in the experiments. We gratefully thank also Mr. Federico Piccirillo (Montemagno Resource Inc.), Mr. Emanuel Endrizzi and Dr. Luca Pedron (Fondazione Edmund Mach) for the technical assistance in the laboratory and field and Mrs. Tessa Say for the useful English corrections. The authors acknowledge the two anonymous reviewers and the editor for the appreciated constructive comments and suggestions which have helped to improve the manuscript. This work is part of the project ECOCYPRE (Ecological assessment and sustainable managements of cypress in the landscape of Trentino) that was funded to Dr. Nicola La Porta by the Provincia autonoma di Trento through Grant No. 437.

## References

- Theocharis, A., Clement, C., & Barka, E. A. (2012). Physiological and molecular changes in plants grown at low temperatures. *Planta*, 235, 1091–1105.
- Hincha, D. K. (2002). Cryoprotectin: A plant lipid-transfer protein homologue that stabilizes membranes during freezing. *Philosophical Transactions of the Royal Society of London. Series B*, 357, 909–915.
- Yaish, M. W. F., Doxey, A. C., McConkey, B. J., Moffatt, B. A., & Griffith, M. (2006). Cold-active winter rye glucanases with ice-binding capacity. *Plant Physiology*, 141, 1459–1472.
- Welling, A., & Palva, E. T. (2006). Molecular control of cold acclimation in trees. *Physiol Plantarum*, 127, 167–181.
- Fernandez, O., Theocharis, A., Bordiec, S., Feil, R., Jacquens, L., Clement, C., et al. (2012). Acclimates grapevine to cold by modulating carbohydrate metabolism. *Molecular Plant-Microbe Interactions*, 25, 496–504.
- Eriksson, S. K., Kutzer, M., Procek, J., Grobner, G., & Harryson, P. (2011). Tunable membrane binding of the intrinsically disordered dehydrin Lti30, a cold-induced plant stress protein. *Plant Cell*, 23, 2391–2404.
- Bies-Etheve, N., Gaubier-Comella, P., Debures, A., Lasserre, E., Jobet, E., Raynal, M., et al. (2008). Inventory, evolution and expression profiling diversity of the LEA (late embryogenesis abundant) protein gene family in *Arabidopsis thaliana*. *Plant Molecular Biology*, 67, 107–124.
- Heddad, M., Noren, H., Reiser, V., Dunaeva, M., Andersson, B., & Adamska, I. (2006). Differential expression and localization of early light-induced proteins in *Arabidopsis*. *Plant Physiology*, 142, 75–87.
- Degenkolbe, T., Giavalisco, P., Zuther, E., Seiwert, B., Hincha, D. K., & Willmitzer, L. (2012). Differential remodeling of the lipidome during cold acclimation in natural accessions of *Arabidopsis thaliana*. *The Plant Journal*, 72, 972–982.
- Mao, D., & Chen, C. (2012). Colinearity and similar expression pattern of rice DREB1 s reveal their functional conservation in the cold-responsive pathway. *PLoS ONE*, 7, e47275. doi:10.1371/journal.pone.0047275.
- Checker, V. G., Chhibbar, A. K., & Khurana, P. (2012). Stress-inducible expression of barley Hva1 gene in transgenic mulberry displays enhanced tolerance against drought, salinity and cold stress. *Transgenic Research*, 21, 939–957.
- Perdiguerro, P., Barbero, M. C., Cervera, M. T., Soto, A., & Collada, C. (2012). Novel conserved segments are associated with differential expression patterns for Pinaceae dehydrins. *Planta*, 236, 1863–1874.
- Dauwe, R., Holliday, J. A., Aitken, S. N., & Mansfield, S. D. (2012). Metabolic dynamics during autumn cold acclimation within and among populations of Sitka spruce (*Picea sitchensis*). *New Phytologist*, 194, 192–205.
- D'Angeli, S., Falasca, G., Matteucci, M., & Altamura, M. M. (2013). Cold perception and gene expression differ in *Olea europaea* seed coat and embryo during drupe cold acclimation. *New Phytologist*, 197, 123–138.
- Larcher, W. (2001). *Ökophysiologie der Pflanzen: (S. E. Ulmer) ed* (p. 302). Stuttgart: Eugen Ulmer.
- Bagnoli, F., Vendramin, G. G., Buonamici, A., Doulis, A. G., Gonzalez-Martinez, S. C., La Porta, N., et al. (2009). Is *Cupressus sempervirens* native in Italy? An answer from genetic and palaeobotanical data. *Molecular Ecology*, 18, 2276–2286.
- Baldi, P., Muthuchelian, K., & La Porta, N. (2012). Leaf plasticity to light intensity in Italian cypress (*Cupressus sempervirens* L.): Adaptability of a Mediterranean conifer cultivated in the Alps. *Journal of Photochemistry and Photobiology B: Biology*, 117, 61–69.
- Zorer, R., Eccel, E., Tognetti, R., & La Porta, N. (2014). A Mediterranean conifer under vegetation shift: Seasonal changes of photochemical activity in *Cupressus sempervirens* (L.) and evidence of correlation with temperature models. *Italian Journal of Agrometeorology*, 1, 29–40.

19. La Porta, N., Bertamini, M., Nedunchezian, N., Raddi, P., & Muthuchelian, K. (2005). Photoinhibition of photosynthesis in needles of two cypress (*Cupressus sempervirens* L.) clones. *Tree Physiology*, 25, 1033–1039.
20. Weger, H. G., Silim, S. N., & Guy, R. D. (1993). Photosynthetic acclimation to low temperature by western red cedar seedlings. *Plant, Cell and Environment*, 16, 711–717.
21. La Porta, N., Bertamini, M., Nedunchezian, N., & Muthuchelian, K. (2006). Photosynthetic changes that occur during aging of cypress (*Cupressus sempervirens* L.) needles. *Photosynthetica*, 44, 555–560.
22. Muthuchelian, K., La Porta, N., Bertamini, M., & Nedunchezian, N. (2005). Cypress canker induced inhibition of photosynthesis in field grown cypress (*Cupressus sempervirens* L.) needles. *Physiological and Molecular Plant Pathology*, 67, 33–39.
23. Muthuchelian, K., Bertamini, M., La Porta, N., & Nedunchezian, N. (2005). Photoinhibition and recovery of photosynthesis in canker-susceptible and resistant needles of cypress (*Cupressus sempervirens* L.). *J. Phytopath.*, 153, 337–343.
24. Zocca, A., Zanini, C., Aimi, A., Frigimelica, G., La Porta, N., & Battisti, A. (2008). Spread of a plant pathogen and associated insect vectors at the northern range margin of cypress (*Cupressus sempervirens*). *Acta Oecologica*, 33, 307–313.
25. Oshlack, A., Robinson, M. D., & Young, M. D. (2010). From RNA-seq reads to differential expression results. *Genome Biology*, 11, 220.
26. Gu, R. S., Fonseca, S., Puskas, L. G., Hackler, L., Zvara, A., Dudits, D., & Pais, M. S. (2004). Transcript identification and profiling during salt stress and recovery of *Populus euphratica*. *Tree Physiology*, 24, 265–276.
27. Yakovlev, I. A., Fossdal, C. G., Johnsen, O., Junttila, O., & Skroppa, T. (2006). Analysis of gene expression during bud burst initiation in Norway spruce via ESTs from subtracted cDNA libraries. *Tree Genetics and Genomes*, 2, 39–52.
28. Pedron, L., Baldi, P., Hietala, A. M., & La Porta, N. (2009). Genotype-specific regulation of cold-responsive genes in cypress (*Cupressus sempervirens* L.). *Gene*, 437, 45–53.
29. Xu, L., Yuan, Y., Zhang, L., Wan, L., Zheng, Y., Zhou, P., & Li, D. (2011). Identification and characterization of differential gene expression in the mesocarp and kernel of oil palm nuts using suppression subtractive hybridization. *Tree Genetics and Genomes*, 7, 999–1010.
30. La Porta, N., Battisti, A., & Raddi, P. (2005). Ecological assessment and sustainable management of cypress under climate change conditions in the Italian Alps. *International Forest Review*, 7(5), 82.
31. Moser, C., Gatto, P., Moser, M., Pindo, M., & Velasco, R. (2004). Isolation of functional RNA from small amounts of different grape and apple tissues. *Molecular Biotechnology*, 26, 95–99.
32. Simon, N., Campbell, L., Ornlöf, E., Groben, R., Guillou, L., Lange, M., & Medlin, L. K. (2000). Oligonucleotide probes for the identification of three algal groups by dot blot and fluorescent whole-cell hybridization. *Journal of Eukaryotic Microbiology*, 47, 76–84.
33. Edgar, R. C. (2004). MUSCLE: Multiple sequence alignment with high accuracy and high throughput. *Nucleic Acids Research*, 32, 1792–1797.
34. Tamura, K., Peterson, D., Peterson, N., Stecher, G., Nei, M., & Kumar, S. (2011). MEGA5: Molecular evolutionary genetics analysis using maximum likelihood, evolutionary distance, and maximum parsimony methods. *Molecular Biology and Evolution*, 28, 2731–2739.
35. Huang, X., & Madan, A. (1999). CAP3: A DNA sequence assembly program. *Genome Research*, 9, 868–877.
36. Ashburner, M., Ball, C. A., Blake, J. A., Botstein, D., Butler, H., Cherry, J. M., et al. (2000). Gene ontology: Tool for the unification of biology. *The Gene Ontology Consortium. Nat Genet*, 25, 25–29.
37. Schiex, T., Gouzy, J., Moisan, A., & De Oliveira, Y. (2003). FrameD: A flexible program for quality check and gene prediction in prokaryotic genomes and noisy matured eukaryotic sequences. *Nucleic Acids Research*, 31, 3738–3741.
38. Simkin, A. J., Qian, T., Cailliet, V., Michoux, F., Ben Amor, M., Lin, C., et al. (2006). Oleosin gene family of *Coffea canephora*: Quantitative expression analysis of five oleosin genes in developing and germinating coffee grain. *Journal of Plant Physiology*, 163, 691–708.
39. Peng, Y., Lin, W., Wei, H., Krebs, S. L., & Arora, R. (2008). Phylogenetic analysis and seasonal cold acclimation-associated expression of early light-induced protein genes of *Rhododendron catawbiense*. *Physiologia Plantarum*, 132, 44–52.
40. Palmé, A. E., Pyhäjärvi, T., Wachowiak, W., & Savolainen, O. (2009). Selection on nuclear genes in a *Pinus* phylogeny. *Molecular Biology and Evolution*, 26, 893–905.
41. Thomashow, M. F. (1999). Plant cold acclimation: Freezing tolerance genes and regulatory mechanisms. *Annual Review of Plant Physiology and Plant Molecular Biology*, 50, 571–599.
42. Wang, Y. Q., Shen, J. K., Berglund, T., Ohlsson, A. B., Tang, X. F., Zhou, Z. K., et al. (2010). Analysis of expressed sequence tags from *Ginkgo* mature foliage in China. *Tree Genetics and Genomes*, 6, 357–365.
43. Ujino-Ihara, T., Kanamori, H., Yamane, H., Taguchi, Y., Namiki, N., Mukai, Y., et al. (2005). Comparative analysis of expressed sequence tags of conifers and angiosperms reveals sequences specifically conserved in conifers. *Plant Molecular Biology*, 59, 895–907.
44. Mishra, S., Srivastava, S., & Nautiyal, C. S. (2014). Differential gene expression profile in *Pseudomonas putida* NBRIC19-treated wheat (*Triticum aestivum*) plants subjected to biotic stress of *Parthenium hysterophorus*. *Molecular Biology Reports*, 41, 1385–1399.
45. Fan, Q. J., Yan, F. X., Qiao, G., Zhang, B. X., & Wen, X. P. (2014). Identification of differentially-expressed genes potentially implicated in drought response in pitaya (*Hylocereus undatus*) by suppression subtractive hybridization and cDNA microarray analysis. *Gene*, 533, 322–331.
46. Kaplan, F., Kopka, J., Sung, D. Y., Zhao, W., Popp, M., Porat, R., & Guy, C. L. (2007). Transcript and metabolite profiling during cold acclimation of *Arabidopsis* reveals an intricate relationship of cold-regulated gene expression with modifications in metabolite content. *The Plant Journal*, 50, 967–981.
47. Purdy, S. J., Bussell, J. D., Nunn, C. P., & Smith, S. M. (2013). Leaves of the *Arabidopsis* maltose exporter1 mutant exhibit a metabolic profile with features of cold acclimation in the warm. *PLoS One*, 8, e79412. doi:10.1371/journal.pone.0079412.
48. Lee, J. H., Yu, D. J., Kim, S. J., Choi, D., & Lee, H. J. (2012). Intraspecific differences in cold hardiness, carbohydrate content and beta-amylase gene expression of *Vaccinium corymbosum* during cold acclimation and deacclimation. *Tree Physiology*, 32, 1533–1540.
49. Ito, A., Sugiura, T., Sakamoto, D., & Moriguchi, T. (2013). Effects of dormancy progression and low-temperature response on changes in the sorbitol concentration in xylem sap of Japanese pear during winter season. *Tree Physiology*, 33, 398–408.
50. Secchi, F., & Zwieniecki, M. A. (2012). Analysis of xylem sap from functional (non-embolized) and nonfunctional (embolized) vessels of *Populus nigra*: Chemistry of refilling. *Plant Physiology*, 160, 955–964.
51. Riikonen, J., Kontunen-Soppela, S., Vapaavuori, E., Tervahauta, A., Tuomainen, M., & Oksanen, E. (2013). Carbohydrate concentrations and freezing stress resistance of silver birch buds grown under elevated temperature and ozone. *Tree Physiology*, 33, 311–319.
52. Boneh, U., Biton, I., Schwartz, A., & Ben-Ari, G. (2012). Characterization of the ABA signal transduction pathway in *Vitis vinifera*. *Plant Science*, 187, 89–96.

53. Mittler, R. (2006). Abiotic stress, the field environment and stress combination. *Trends in Plant Science*, *11*, 15–19.
54. Mao, X., Chen, S., Li, A., Zhai, C., & Jing, R. (2014). Novel NAC transcription factor TaNAC67 confers enhanced multi-abiotic stress tolerances in *Arabidopsis*. *PLoS One*, *9*, e84359. doi:10.1371/journal.pone.0084359.
55. Baldi, P., Pedron, L., Hietala, A. M., & La Porta, N. (2011). Cold tolerance in cypress (*Cupressus sempervirens* L.): A physiological and molecular study. *Tree Genetics and Genomes*, *7*, 79–90.
56. Uemura, M., Tominaga, Y., Nakagawara, C., Shigematsu, S., Minami, A., & Kawamura, Y. (2006). Responses of the plasma membrane to low temperatures. *Physiologia Plantarum*, *126*, 81–89.
57. Kazemi Shahandashti, S. S., Maali Amiri, R., Zeinali, H., & Ramezanzpour, S. S. (2013). Change in membrane fatty acid compositions and cold-induced responses in chickpea. *Molecular Biology Reports*, *40*, 893–903.
58. Abdrakhamanova, A., Wang, Q. Y., Khokhlova, L., & Nick, P. (2003). Is microtubule disassembly a trigger for cold acclimation? *Plant and Cell Physiology*, *44*, 676–686.
59. Kosova, K., Vitamvas, P., & Prasil, I. T. (2007). The role of dehydrins in plant response to cold. *Biologia Plantarum*, *51*, 601–617.
60. Sandve, S. R., Kosmala, A., Rudi, H., Fjellheim, S., Rapacz, M., Yamada, T., & Rognli, O. A. (2011). Molecular mechanisms underlying frost tolerance in perennial grasses adapted to cold climates. *Plant Science*, *180*, 69–77.
61. La Porta, N., Bertamini, M., Nedunchezian, N., & Muthuchelian, K. (2004). High irradiance induced changes on photosystem 2 in young and mature needles of cypress (*Cupressus sempervirens* L.). *Photosynthetica*, *42*, 263–271.
62. Bascunan-Godoy, L., Sanhueza, C., Cuba, M., Zuniga, G. E., Corcuera, L. J., & Bravo, L. A. (2012). Cold-acclimation limits low temperature induced photoinhibition by promoting a higher photochemical quantum yield and a more effective PSII restoration in darkness in the Antarctic rather than the Andean ecotype of *Colobanthus quitensis* Kunt Bartl (Cariophyllaceae). *BMC Plant Biology*, *12*, 114.
63. Nylander, M., Svensson, J., Palva, E. T., & Welin, B. V. (2001). Stress-induced accumulation and tissue-specific localization of dehydrins in *Arabidopsis thaliana*. *Plant Molecular Biology*, *45*, 263–279.
64. Rorat, T. (2006). Plant dehydrins-tissue location, structure and function. *Cellular & Molecular Biology Letters*, *11*, 536–556.
65. Yang, Y., He, M., Zhu, Z., Li, S., Xu, Y., Zhang, C., et al. (2012). Identification of the dehydrin gene family from grapevine species and analysis of their responsiveness of various forms of abiotic and biotic stress. *BMC Plant Biology*, *54*, 743–753.
66. Hanin, M., Brini, F., Ebel, E., Toda, Y., Takeda, S., & Masmoudi, K. (2011). Plant dehydrins and stress tolerance: Versatile proteins for complex mechanisms. *Plant Signaling & Behavior*, *6*, 1503–1509.
67. Adamska, I., & Kloppstech, K. (1991). Evidence for an association of the early light-inducible protein (ELIP) of pea with photosystem II. *Plant Molecular Biology*, *16*, 209–223.
68. Hutin, C., Nussaume, L., Moise, N., Moya, I., Kloppstech, K., & Havaux, M. (2003). Early light-induced proteins protect *Arabidopsis* from photooxidative stress. *Proceedings of the National Academy of Sciences of the United States of America*, *100*, 4921–4926.
69. Zarter, C. R., Adams, W. W., 3rd, Ebbert, V., Adamska, I., Jansson, S., & Demmig-Adams, B. (2006). Winter acclimation of PsbS and related proteins in the evergreen *Arctostaphylos uva-ursi* as influenced by altitude and light environment. *Plant, Cell and Environment*, *29*, 869–878.
70. Rossini, S., Casazza, A. P., Engelmann, E. C., Havaux, M., Jennings, R. C., & Soave, C. (2006). Suppression of both ELIP1 and ELIP2 in *Arabidopsis* does not affect tolerance to photoinhibition and photooxidative stress. *Plant Physiology*, *141*, 1264–1273.
71. Zhou, C. G. S. (2009). Senescence. In D. M. Pua EC (Ed.), *Plant developmental biology: Biotechnological perspectives* (pp. 151–169). Berlin: Springer.
72. Guo, Y., & Gan, S. S. (2012). Convergence and divergence in gene expression profiles induced by leaf senescence and 27 senescence-promoting hormonal, pathological and environmental stress treatments. *Plant, Cell and Environment*, *35*, 644–655.
73. Zhao, L., Zhang, H., Zhang, B., Bai, X., & Zhou, C. (2012). Physiological and molecular changes of detached wheat leaves in responding to various treatments. *Journal of Integrative Plant Biology*, *54*, 567–576.
74. Lim, P. O., Kim, H. J., & Nam, H. G. (2007). Leaf senescence. *Annual Review of Plant Biology*, *58*, 115–136.
75. Shimada, T. L., Shimada, T., Takahashi, H., Fukao, Y., & Hara-Nishimura, I. (2008). A novel role for oleosins in freezing tolerance of oilseeds in *Arabidopsis thaliana*. *The Plant Journal*, *55*, 798–809.
76. Tanaka, H., Osakabe, Y., Katsura, S., Mizuno, S., Maruyama, K., Kusakabe, K., et al. (2012). Abiotic stress-inducible receptor-like kinases negatively control ABA signaling in *Arabidopsis*. *The Plant Journal*, *70*, 599–613.
77. Xue-Xuan, X., Hong-Bo, S., Yuan-Yuan, M., Gang, X., Jun-Na, S., Dong-Gang, G., & Cheng-Jiang, R. (2010). Biotechnological implications from abscisic acid (ABA) roles in cold stress and leaf senescence as an important signal for improving plant sustainable survival under abiotic-stressed conditions. *Critical Reviews in Biotechnology*, *30*, 222–230.
78. Huang, G. T., Ma, S. L., Bai, L. P., Zhang, L., Ma, H., Jia, P., et al. (2012). Signal transduction during cold, salt, and drought stresses in plants. *Molecular Biology Reports*, *39*, 969–987.
79. Tzen, J. T., Lai, Y. K., Chan, K. L., & Huang, A. H. (1990). Oleosin isoforms of high and low molecular weights are present in the oil bodies of diverse seed species. *Plant Physiology*, *94*, 1282–1289.
80. Kim, H. U., Hsieh, K., Ratnayake, C., & Huang, A. H. (2002). A novel group of oleosins is present inside the pollen of *Arabidopsis*. *Journal of Biological Chemistry*, *277*, 22677–22684.